



## Rabbit anti LSP (pS190) Polyclonal Antibody

Alternative Name(s): Lymphocyte-specific protein 1

### Order Information

- **Description:** LSP (pS190)
- **Catalogue:** 602-250
- **Lot:** See label
- **Size:** 100ug/200ul
- **Host:** Rabbit
- **Clone:** nan
- **Application:** IHC(P), WB
- **Reactivity:** Hu, Ms, Rt

### ANTIGEN PREPARATION

A synthetic peptide corresponding to the C-terminus with a phosphorylated serine of human lymphocyte-specific protein 1. This sequence is identical to mouse species

### BACKGROUND

Leukocyte-specific protein 1 (LSP1), an F-actin binding protein and a major downstream substrate of p38 mitogen-activated protein kinase as well as protein kinase C, is important in leukocyte chemotaxis. Two serine residues at positions 204 and 252 are potential phosphorylation sites. The amino acid sequences surrounding these two sites are in agreement with the consensus sequence (Xaa-Xaa-Hyd-Xaa-Arg-Xaa-Xaa-Ser-Xaa-Xaa) for phosphorylation by MAPKAP kinase 2. Both serine residues in human LSP1 and the corresponding conserved serine residues in human and mouse LSP1 are in the basic C-terminal F-actin binding domain. LSP1 is a substrate for MAPKAP kinase 2 in vitro and that the phosphorylation sites are located in the basic C-terminal domain of LSP1.

### PURIFICATION

The Rabbit IgG is purified by site-modified Epitope Affinity Purification.

### FORMULATION

This affinity purified antibody is supplied in sterile Tris-buffered saline (pH7.2) containing antibody stabilizer

### SPECIFICITY

This antibody recognizes ~52 kDa of human LSP1 protein at a phosphorylated serine 252. It does not recognize non-phosphorylated peptides confirmed by dot blot. This antibody also reacts with Rat and mouse. The other species are not tested.

### STORAGE

The antibodies are stable for 24 months from date of receipt when stored at -20oC to -70oC. The antibodies can be stored at 2oC-8oC for three month without detectable loss of activity. Avoid repeated freezing-thawing cycles.

### APPLICATIONS/SUGGESTED WORKING DILUTIONS\*

- Western Blot: 0.1-1 µg/ml
- ELISA: 0.01-0.1 µg/ml
- Immunoprecipitation: 2-5 µg/ml
- IHC: 2-10 µg/ml
- Flow cytometry: Not tested
- Molecular Weight: 55.0
- Positive Control: Kidney Tissue
- Cellular Location: Cell Membrane

\*Optimal dilutions should be determined by researchers for the specific applications.

### FOR RESEARCH USE ONLY.

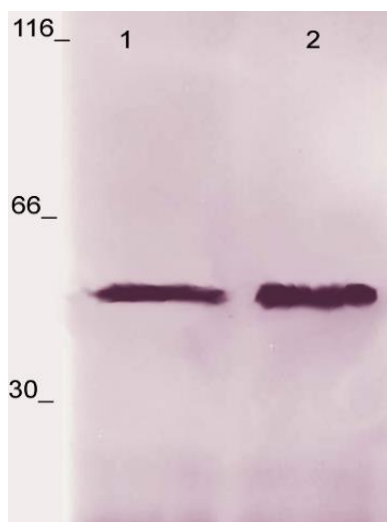
AbboMax, Inc 2528 Qume Drive, Suite 8, San Jose, California 95131, USA  
1 408-573-1898 (Tel). 1 408-573-1858 (Fax). [www.abbomax.com](http://www.abbomax.com) [info@abbomax.com](mailto:info@abbomax.com)



**FOR RESEARCH USE ONLY.**

AbboMax, Inc 2528 Qume Drive, Suite 8, San Jose, California 95131, USA  
1 408-573-1898 (Tel). 1 408-573-1858 (Fax). [www.abbomax.com](http://www.abbomax.com) [info@abbomax.com](mailto:info@abbomax.com)

## DATA ATTACHMENTS



Western Blot: The whole cell lysate derived from m-CSF stimulated Jurkat cells (lane 1) or mouse spleen (Lane 2) were immune-probed by Rabbit anti phospho-LSP1 (pS190) (Cat#602-250) at 1:500. An immunoreactive band is observed around ~52kDa .

## REFERENCES

### FOR RESEARCH USE ONLY.

AbboMax, Inc 2528 Qume Drive, Suite 8, San Jose, California 95131, USA  
1 408-573-1898 (Tel). 1 408-573-1858 (Fax). [www.abbomax.com](http://www.abbomax.com) [info@abbomax.com](mailto:info@abbomax.com)